

BONUS YOUR ANNUAL HAUL-OUT GUIDE

SOUTHERN[®] BOATING

southernboating.com
MARCH 2008

Regional Review:

NORTH CAROLINA'S
BOATBUILDERS

Just Launched

Jarrett Bay 63
Eastbay 55 SX
Velocity's S.U.B.

Globetrotting ON A 64' LRC



U.S. \$4.99 CANADA \$5.99
DISTRIBUTED INTERNATIONALLY

NEW BOAT: JARRETT BAY 63 SPORTFISHERMAN



Wood Works

***Southern Exposure* offers proof there's something special about a wooden hull.**

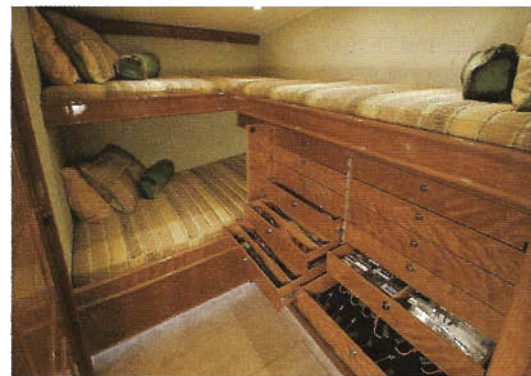
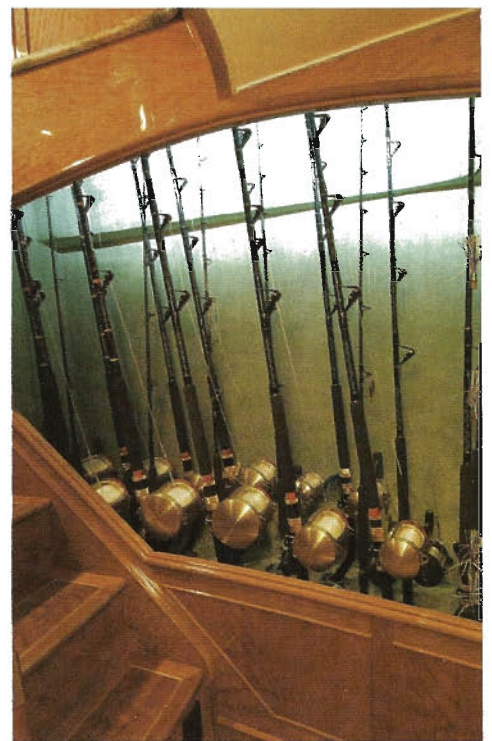
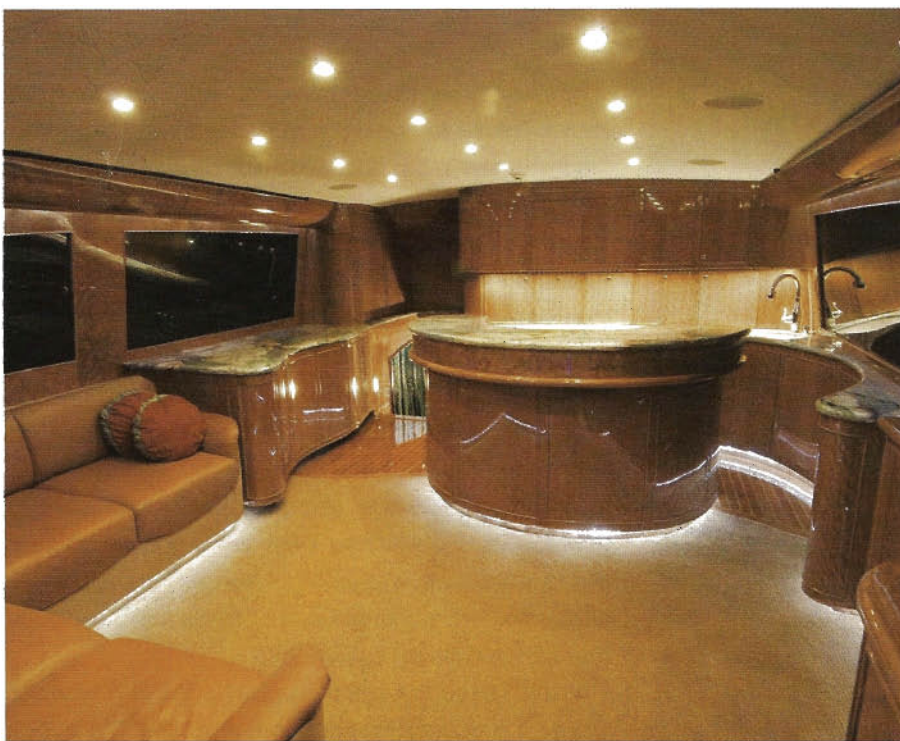
America is the birthplace of the tournament sportfisherman—the boat, as well as the angler. Nowhere else on earth can you find so many fine brands of hard-charging, wave-piercing, offshore fishing machines. But even among these championship contenders, there is a heavyweight class; a small group of boats that draw envious stares on the high-stakes tournament circuit—the custom-built, wooden sportfish. In a relatively short period of time, Jarrett Bay Boatworks of Beaufort, North Carolina, a yard founded by former professional charter boat captains in 1986, has vaulted itself into this elite circle. As proof, we offer the yard's most recent launch, the screaming orange Jarrett Bay 63 *Southern Exposure*.

Like custom megayachts twice her size, *Southern Exposure*

was designed by the Jarrett Bay team to the personal specifications of her owner, tournament angler Rob Gollahon. "He was so involved during the two-year design and construction process, that he was almost like one of the crew," said Gary Davis, head of new construction and design for Jarrett Bay. "As a rule, by the time a boat's done, we really are more [like] friends than in a business relationship. I think that says more about our company than anything else."

The 63 was a step up from Gollahon's previous boat, a 55-footer that was begun by another yard, but finished at Jarrett

BY LOUISA BECKETT
PHOTOS BY SCOTT TAYLOR



Don't look for that hull color on a marine paint chart, that's a custom automotive coating behind that orange hull. Among the interior details are an island galley (upper left) hiding a pull-out ceramic cooktop under the granite bar. One of the state-rooms is an angler's cabin with custom reel and tackle drawers (above). Elegant joinery details can be seen in the rod stowage display.

Bay. His mission statement for the new boat was challenging. "This particular owner does a lot of traveling. He fishes in Bermuda regularly. He fishes in Panama. He fishes tournaments up and down the East Coast," Gary said. "This boat is designed specifically for traveling and being self-sufficient for extended periods. Just about every system is redundant."

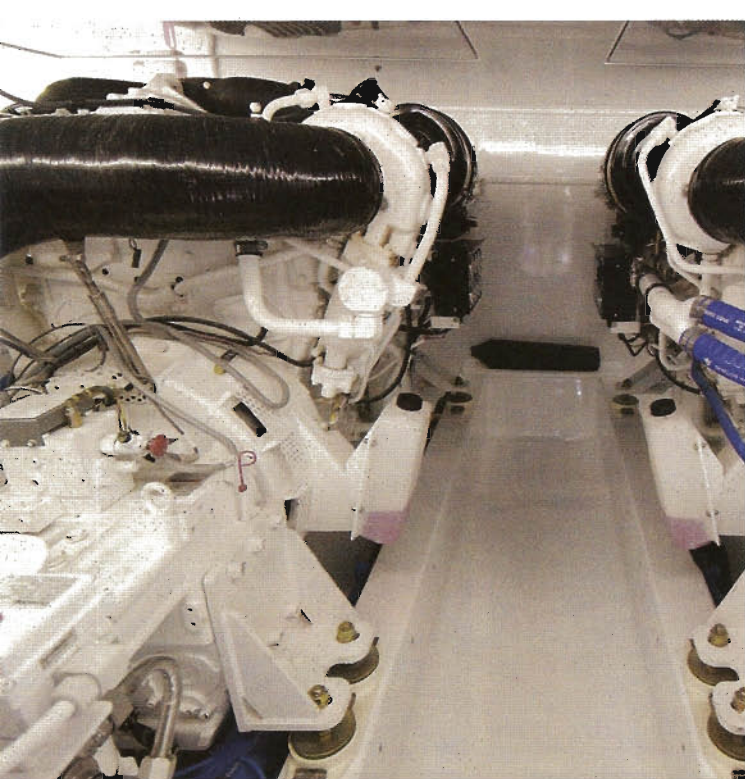
A fuel capacity in excess of 2,000 gallons gives *Southern Exposure* the range to take her from her homeport in North Carolina to Bermuda, and her bluewater hull ensures a smooth ride even on that often-hairy run.

"This is the first boat with our improved hull design," Gary said. Jarrett Bay's standard hullform benefited from an earlier joint research project with engine manufacturer MTU and tank testing in

Holland. While Gary's team maintained the sharp entry and relatively flat after section, they added a little bit of shape to the bottom. "We've never had a bad sea boat, but everyone who has been on [*Southern Exposure*] says this one is even better," he said.

Jarrett Bay's hulls are cold-molded utilizing epoxy, fir frames, and fir and okoume marine plywood between bi- and tri-directional fiberglass in a process careful to preserve Jarrett Bay's trademark length-to-weight ratio. The result is a highly stable platform while running and maneuvering on a fish.

As for the boat's topsides, let's just say there's a reason that many of America's top custom sportfishermen are built in wood. The Jarrett Bay 63's sweeping sheerline and Carolina flare are pure poetry.



Despite the fact the powerplant consists of a pair of C32s, there is plenty of space to work in *Southern Exposure's* megayacht-quality engine room.

Fine woodwork also characterizes *Southern Exposure's* interior. The millwork is done in ropey cherry with a gloss finish. "All the veneer in this boat came from one log," Gary said. Ropey cherry has a swirly, almost quilted grain creating a pattern as you walk through the yacht.

All the cabinetry on board is subtly curved as well to create a "hydrodynamic" look, representing the flow of water. "All the doors have just enough shape to give them a little curve," Gary said. "It's a theme that was carried throughout the boat." The counters are topped in sea-toned granite.

The saloon/galley is an elegant space for entertaining or kicking back and watching TV. There is enough refrigeration to store a month's worth of supplies, and storage is tucked into every available inch of space. Even the cook-top hides away in the center island.

At the foot of the companionway stairs is a dramatic lighted rod display wrapped in teal suede. The mate's quarters, opposite, feature a beautiful set of locking tackle drawers. Each one has varnished cherry dividers designed and measured to hold specific lures in place.

Southern Exposure's surprisingly spacious three-stateroom layout includes a guest cabin with extra-long bunks and the

Unexpected Luxury in the Florida Keys



Find yourself immersed in a world of unparalleled luxury, endless sunshine and natural beauty. Singh Resorts offers four richly adorned boutique Beach House and Fishing Villages with 2 and 3 bedroom homes overlooking the sparkling Gulf of Mexico. Gourmet kitchens, intimate dining, pristine sandy beaches, tiki bars, waterfront decks, media rooms, Wi-Fi, full resort amenities and limitless adventure activities.

Singh Resorts

For more information on these luxurious resorts call

1-866-MID-KEYS

www.singhresorts.com

Tranquility Bay
BEACH HOUSE RESORT


Parrot Key Resort

CORAL LAGOON RESORT

BOAT HOUSE MARINA

Indigo Reef
MARINA HOMES RESORT

Specifications

LOA: 63'
Beam: 18' 6"
Draft: 5' 9"
Displacement: 80,000 lbs.
Fuel/Water: 2,000/250 U.S. gals.
Power: 2 x 1,800-hp C32
ACERT Caterpillar
Top/Cruising speed: 41/39 knots
Range: 700 nm @ 25-30 knots

Jarrett Bay Boatworks


Beaufort, NC 28516
252-728-2690
JarrettBay.com

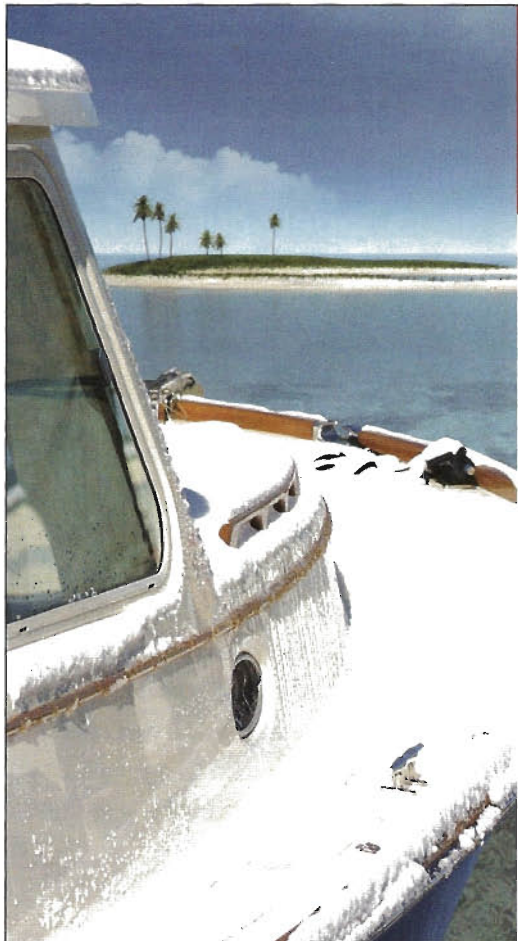
forward owner's stateroom with island queen berth. All three have ensuite heads adorned with hand-carved sand pink onyx. The stone was cut and polished by a firm located in the same 175-acre marine industrial park as Jarrett Bay's yard and booming service and repair facility. Crystal Coast Interiors, which helps owners select interior fabrics for their yachts, is also there, along with Bausch American Towers and other Jarrett Bay vendors, making the industrial park a one-stop shopping center.

Lighted blue steps leads up to *Southern Exposure's* flybridge and tower, custom built by Bausch. Judging by the electronics array at the helm, the owner went for a top-of-the-line navigation package networked with the entertainment system and displayed in two pop-up consoles. "If he wants to watch a movie up here, he can pop it up with the touch pad," Gary said. "And the information on these electronics all can

be piped down to the TV screen in the saloon." Forward, the flybridge lounge has a unique design incorporating five bucket seats.

The large cockpit below has all the standard fishing amenities and a few innovations. The transom is fitted with tuna tubes that pump water over the gills of live, pre-rigged baitfish, essentially keeping them alive and swimming until it's time to dangle them in front of a marlin. There is also a mount in the sole for a specially designed fighting chair for Gollahon's brother, who is in a wheelchair. Together, they have won major tournaments such as the Bermuda Classic.

By building at Jarrett Bay, Gollahon got exactly the right boat for his passions and his needs. The shipyard is offering near sisterships stretched to 64 feet for a price range of \$3 million to \$4.5 million. But no two Jarrett Bays will ever be the same. That is the real beauty of a one-off boat. 



WARNING!

DECK FREEZES BEFORE BRIDGE

Welcome to the comfort zone.

Whether you demand rock-hard ice cream, fresh-as-can-be foodstuffs, or ice-cold, thirst-quenching drinks; *Frigoboat* can deliver. Reliably, quietly, efficiently...no matter what the conditions.

And when life on deck gets too hot to handle, chill out below and relax with *Climma* in the same level of cool, air-conditioned comfort you expect and enjoy at home.

With *Frigoboat* and *Climma* on board, life is as cool as cool can be.

frigoboat®
MARINE REFRIGERATION

CLIMMA®
MARINE AIR CONDITIONING

MAKE LIFE COOLER.

North American Importer: Veco NA, Annapolis, MD 301-352-6962
www.vec-na.com